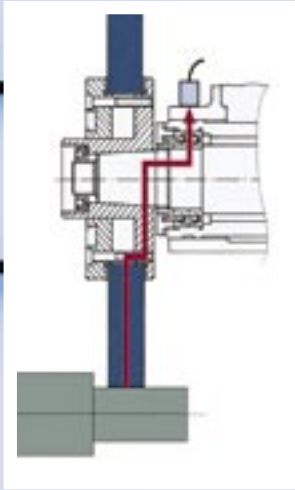




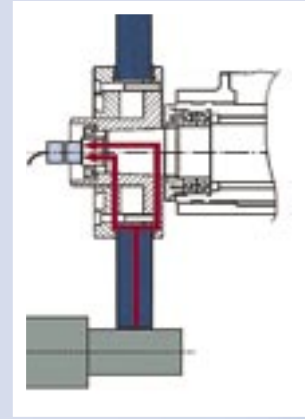
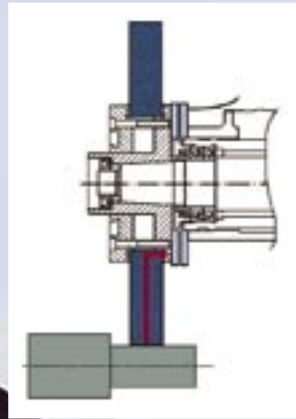
DITTEL

OVERVIEW

**PROCESS CONTROL
AE SENSORS
BALANCING SYSTEMS**



The S-sensor is particularly well-suited for stationary tools, such as single-point dressing tools.



Picking up the AE signal on the rotating spindle allows perfect signal qualities.



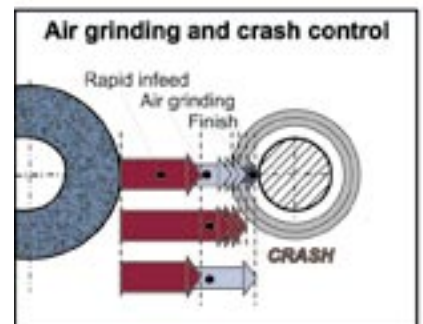
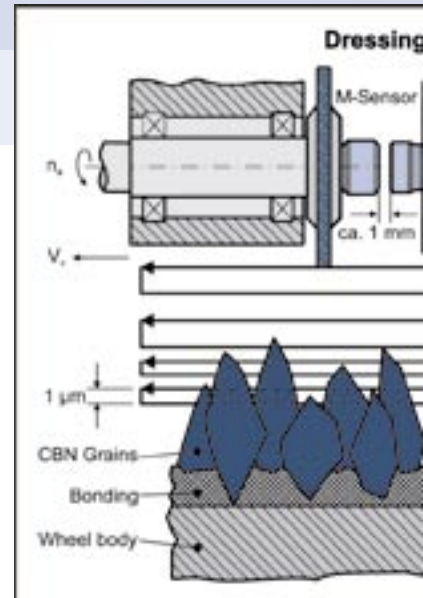
The ring-sensor picks up the AE signal very close at the signal source and acquires it over a large contact area. It is characterised by a very high signal quality and manufactured to customers specific design.

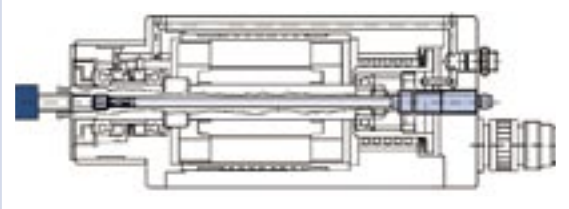
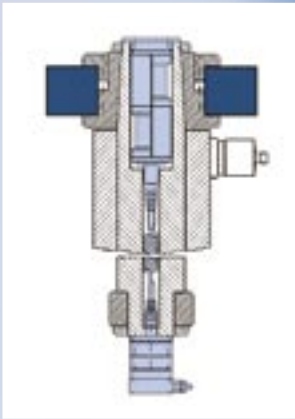
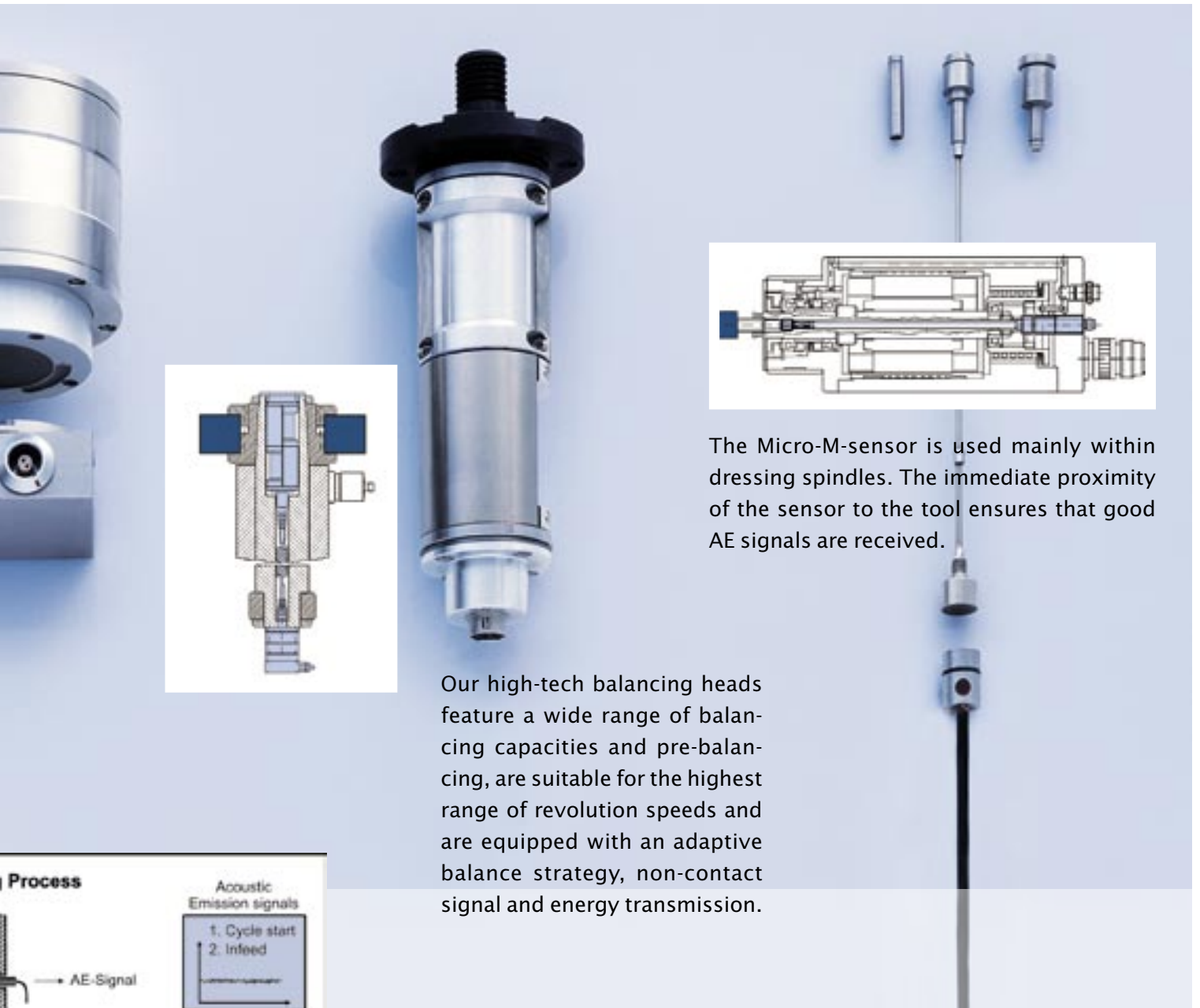
**TOP PROCESS RELIABILITY
THANKS TO TOP SENSOR
QUALITY**

Innovative AE sensors from DITTEL come with maximum sensitivity and optimum signal-to-noise ratio ensuring the best possible process reliability even with small sensors. The large number of sensor variants and sizes provide the perfect solution for every user.

**IDEAL FOR GRINDING
PROCESS**

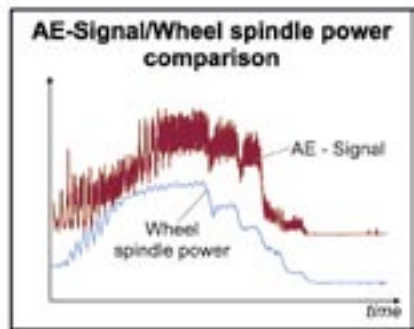
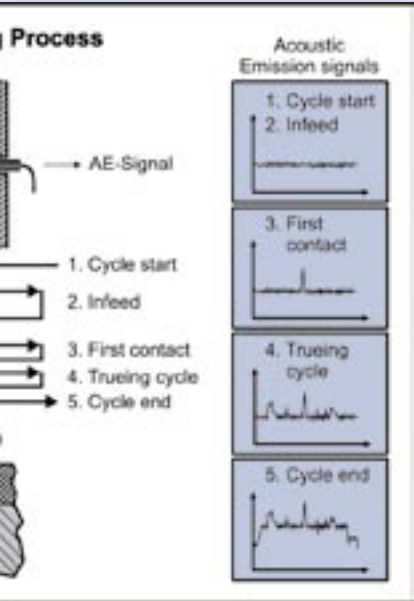
DITTEL monitoring systems allow you to monitor all grinding and dressing processes. These systems are used, for example, in machines for flat grinding, external cylindrical grinding, internal grinding, gear teeth grinding or tool grinding. DITTEL systems will help you to get the most out of your grinding tools.





The Micro-M-sensor is used mainly within dressing spindles. The immediate proximity of the sensor to the tool ensures that good AE signals are received.

Our high-tech balancing heads feature a wide range of balancing capacities and pre-balancing, are suitable for the highest range of revolution speeds and are equipped with an adaptive balance strategy, non-contact signal and energy transmission.



POTENTIAL USES

Crash control

A collision between tool and work-piece is immediately identified, and this is the basis to avoid or minimize further damage.

First contact detection

The evaluation of the AE signal allows identification of the first contact of the tool or workpiece. This reduces the non-productive time substantially.

Process visualisation

The process sequence is visualised on the display and allows the process specialist to assess the process sequence. It can be observed and a process and error analysis may be carried out.

Process optimisation

On the basis of the process visualisation, processes can be optimised, machining time minimised, and at the same time quality will be guaranteed.

International Offices:

BRASILIEN

CANTENA

Contact Person: Mr Oliver ODEBRECHT
Rua Pastor Oswaldo Hesse, 1479
89050-100 Blumenau SC, Brazil
Tel.: +55 (0)47 3035 3606
Fax: +55 (0)47 3035 3606
cantena@cantena.com.br

CHINA

UNIVERSAL HONGKONG TECHNOLOGY CO.LTD.

Contact Person: Mrs Galen GAI
Rm.A2111 Vantone New World Plaza
No.2 Fu Cheng Men Wai Street
Chaoyang District,
Beijing 100037, P.R.China
Tel.: +86 (0)10 68587938-502
Fax: +86 (0)10 68587936
galen@universalhkco.com.cn

INDIEN

NN COMBINED ENGINEERING AGENCIES PVT. LTD.

Contact Person: Mr Nikil NAYAK
125 M.G. Road
Dr. Ranji Block, First Floor
Secunderabad 500 003 AP, India
Tel.: +91 (0)40 2784-4279, 2789-8579
Fax: +91 (0)40 2784-1652
mail@nncea.com
www.nncea.com

ITALIEN

SERMA S.R.L.

Contact Person: Mr Pier Francesco SERENA
Via Due Portoni 41
40132 Bologna, Italy
Tel.: +39 051 641500-6
Fax: +39 051 641500-8
p.serena@sermasrl.it
www.sermasrl.it

JAPAN

FUKUDA CORPORATION

Contact Person: Mr Tatsuo KOISO
11-2, Akashicho, Chuo-ku
Tokyo 104-0004, Japan
Tel.: +81 (0)3 5565-6826
Fax: +81 (0)3 5565-6839
www.fukudaco.co.jp

KOREA

HANKUK FUKUDA CO., LTD.

Contact Person: Mr Dae Gen KIM
#MA-1518, Jung Ang YuTong,
1258 Kuro bon-dong, Kuro-Ku,
Seoul, Korea
Tel.: +82 (0)2 2688-2848
Fax: +82 (0)2 2688-2849
www.fukuda.co.kr

SPANIEN

COHERSA INDUSTRIAS S/A

Contact Person: Mr Luis Carlos
Ramírez BIGORDÁ
Polígono Industrial Comte de Sert
C/ Indústria, 14
08755 Castellbisbal (Barcelona)
Tel.: +34 93 7724298
Fax: +34 93 7724410
lcramirez@coheresa.com

SCHWEDEN / NORWEGEN

ADAMANTIC INTERNATIONAL

Contact Person: Mr Magnus JÖNSSON
Pilfinksgatan 7
41267 Göteborg, Sweden
Tel.: +46 (0) 705 329255
Fax: +46 (0)31 685077
mj.adamantic@telia.com

TAIWAN

JOIN STAR TRADING CO., LTD.

Contact Person: Mr Ali SUNG
No. 1 Lane 550, Chung Chen Road
Hsin Tien City, Taipei county, Taiwan
R.O.C.
Tel.: +88 (0)2 8867-6366
Fax: +88 (0)2 8867-3236
joinstar@ms13.hinet.net
www.join-star.com.tw

GROSSBRITANIEN

REPCO TECHNOLOGY LLP.

Contact Person: Mr Roy PERRY
3 Fairlands Park
Coventry, CV4 7DS, UK
Tel.: +44 (0)24 7641-9808
Fax: +44 (0)24 7669-0717
www.repco-tech.co.uk

USA / KANADA

GTI SPINDLE TECHNOLOGY, INC.

Contact Person: Ms Colleen BOURQUE;
Mr Rob WARD
14015 Carole Drive, Suite 2
Bloomington, IL 61704, USA
Tel.: +1 309 820-7887
Fax: +1 309 820-7897
info@gtispindle.com
www.gtispindle.com



Walter Dittel GmbH

Erpftinger Straße 36
D-86899 Landsberg am Lech
Tel.: +49 (0)8191 3351-0
Fax: +49 (0)8191 3351-49
info@dittel.com
www.dittel.com